



ABOVE IT ALL



MARUTI 360, Opp. Novotel Hotel, Next to Karnavati Club,
Nr. Iskon Cross Road, S.G. Highway, Ahmedabad-380058

99099 23456 | maruti360.com | sales@marutibuildcon.com

PR/GJ/AHMEDABAD/AHMEDABAD CITY/AUDA/RAA12039/280623

Conceptualised by:
Apurva Amin Architects

From bustling cityscapes to
glimmering lights of the night sky,
witness breath-taking panoramic views.



The background is a solid black field. On the left side, there are several vertical, light-colored lines of varying heights, some extending from the top and others from the bottom. Two large, thin, light-colored curved lines sweep across the upper half of the image, starting from the left and curving towards the right. In the bottom right corner, there are several concentric, light-colored curved lines that resemble a stylized horizon or a series of ripples.

Take a walk amidst the clouds

At **360°** you truly feel on top of the world. Find solace from the exhilaration of a bustling city below while revelling in the tranquillity of your oasis in the sky.



Gaze the glimmering stars

Let the night sky unveil its ethereal canvas
and lose yourself in a realm where earthly
boundaries seem to dissolve.

Live at a leisurely pace

The attentively curated amenities at our clubhouse are meticulously crafted for the indulgence of our discerning resident to ensure your comfort, entertainment and well-being.



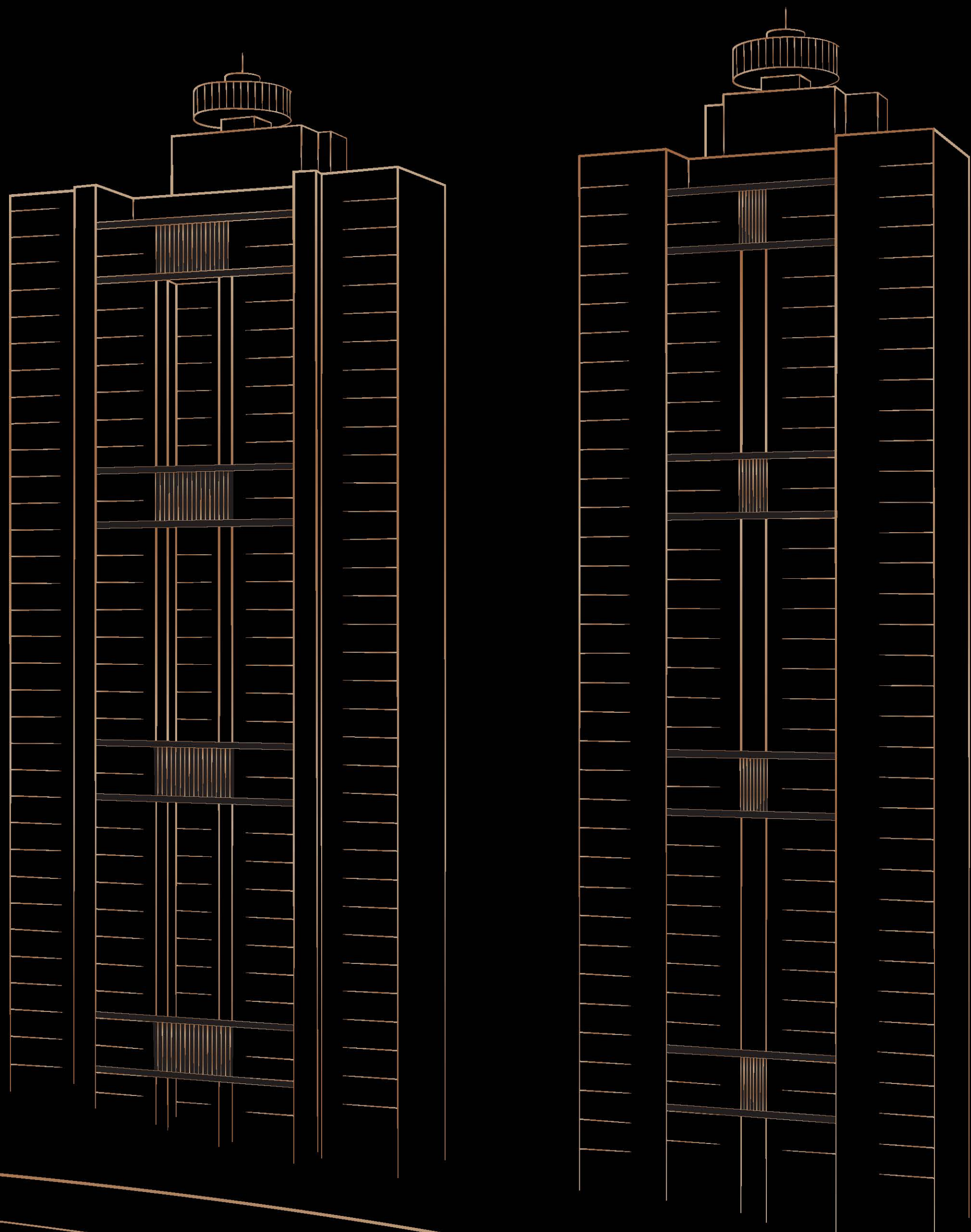


Embrace sophistication as you enter

Be welcomed by a grand entrance that is sure to leave your guests mesmerised. Each time you step through this charming entrance, you'll want to pause and admire the intricate architectural details.

Feel the city come alive

Nestled in the heart of the city, our 37-storey towers are strategically situated in one of the most coveted locations on S.G. Highway, offering lifetime open and unobstructed views. At **360°** - one of the tallest, most iconic uber-luxurious residential projects in Gujarat - you truly witness Ahmedabad from a privileged vantage point.



An aerial photograph of a modern high-rise apartment complex at dusk. The building features a light-colored facade with a grid of windows and balconies, some of which are illuminated from within. The building is topped with a circular observation deck. It is surrounded by lush green trees and other urban buildings in the background. A multi-lane road with cars is visible in the foreground on the right. The sky is a mix of blue and orange hues from the setting or rising sun.

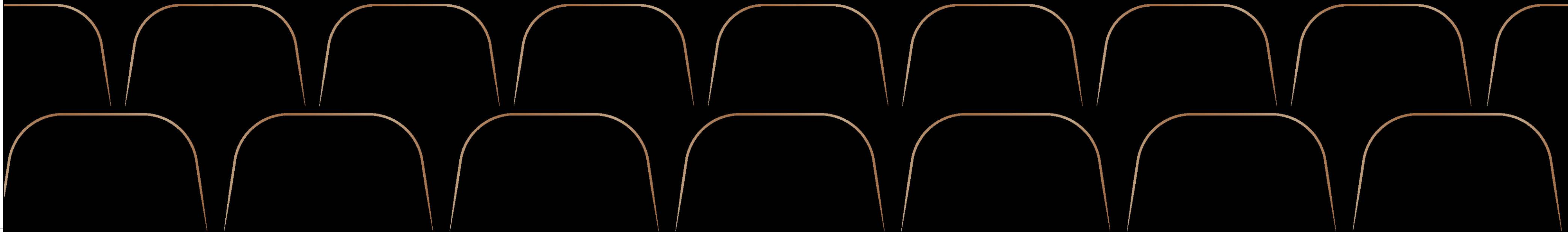
Ascend to awe-inspiring views

An epitome of urban luxury, **360°** by Maruti Buildcon offers an experience that transcends the ordinary.



Embark on a cinematic journey

Let the silver screen at **360°** teleport
you into a realm where imagination
and storytelling intertwine.





2 Iconic
Towers

37 Storeys

4 & 5 BHK
Uber-luxurious suites

501 Feet
Tall



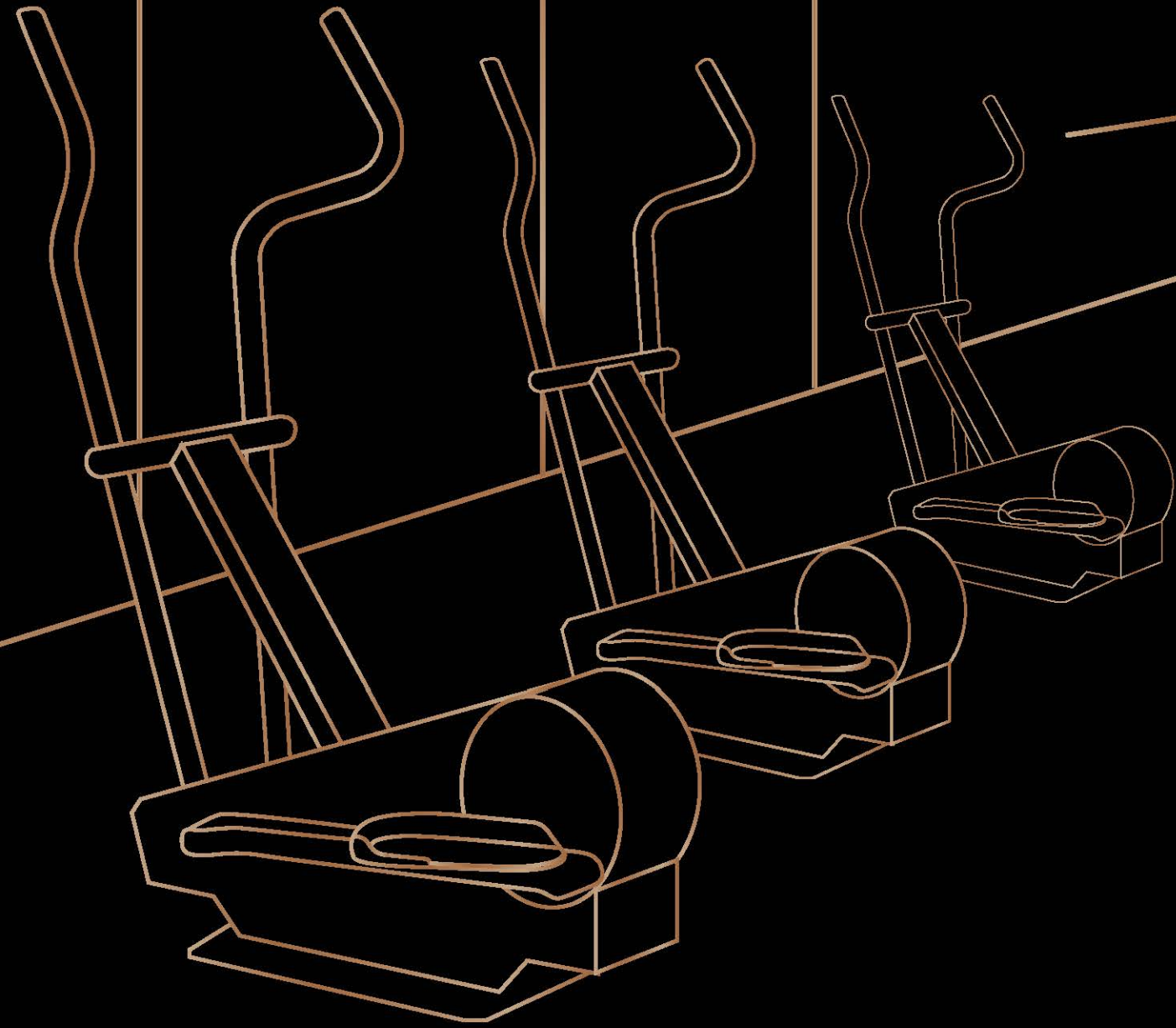
Dive in for sheer bliss

Bask in a true sense of relaxation as
you immerse your worries and step
in for a soothing swim.

Live at an altitude of luxury

From a unique over-the-terrace observatory
to a state-of-the-art gymnasium – the
attentively curated amenities at **360°** are
crafted for the indulgence of our discerning
residents' every desire.





Elevate your fitness journey

The state-of-the-art gymnasium at
360° is an oasis for fitness enthusiasts
and a sanctuary for those seeking
an active lifestyle.

Rise above all else

All-side open, unobstructed views for a lifetime

Height of each tower: 501 feet

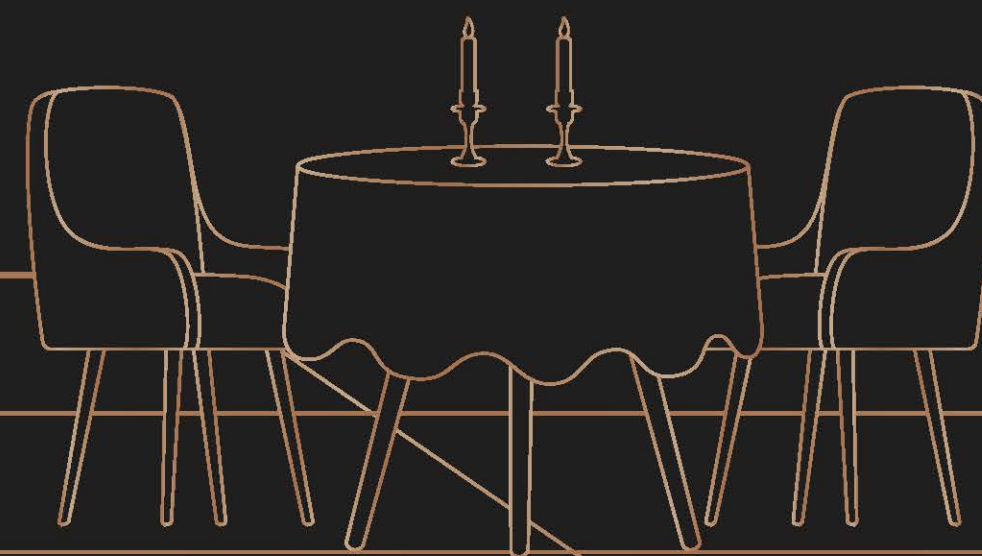
Planned to ensure complete privacy inside

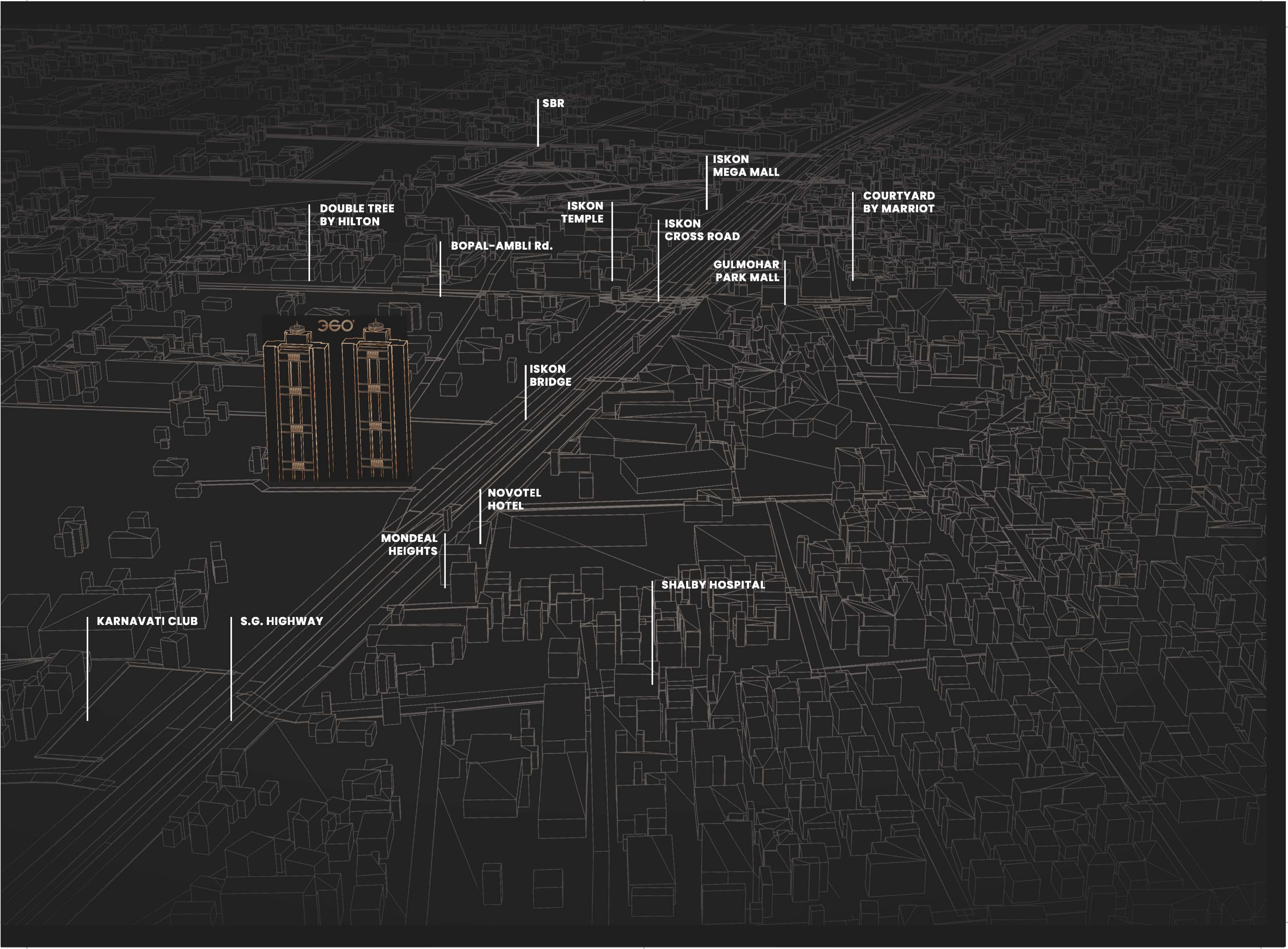




Leave a lasting impression

Make your celebration a reflection of
your personal style and sophistication
by hosting your occasions at **360°**.





SBR

ISKON
MEGA MALL

DOUBLE TREE
BY HILTON

ISKON
TEMPLE

COURTYARD
BY MARRIOTT

BOPAL-AMBLI Rd.

ISKON
CROSS ROAD

GULMOHAR
PARK MALL

360°

ISKON
BRIDGE

NOVOTEL
HOTEL

MONDEAL
HEIGHTS

SHALBY HOSPITAL

KARNAVATI CLUB

S.G. HIGHWAY

The Pinnacle of Modern Living

Beyond breath-taking views, exceptional amenities tailored to your lifestyle, and a location like no other, 360° offers an unparalleled sense of exclusivity that transcends mere accommodation. It truly is a residence that will surpass your expectations and elevate everyday life.

360